



Fig.1

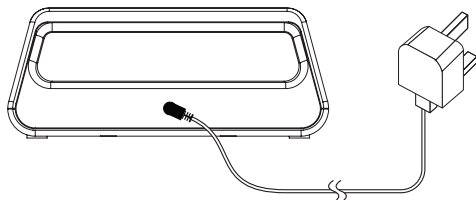


Fig.2

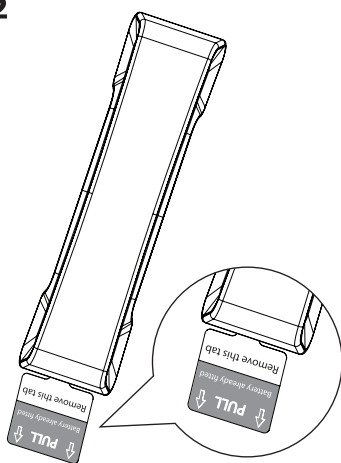
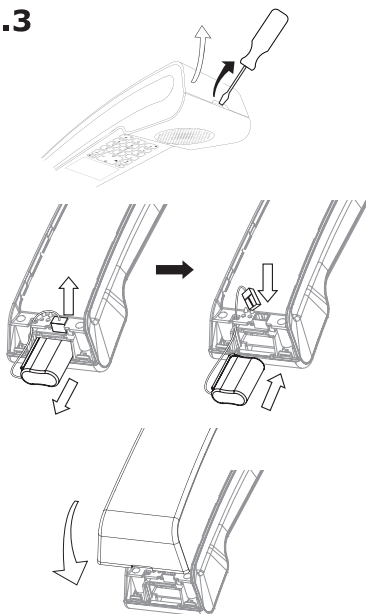


Fig.3



ENGLISH

CONNECTING THE CHARGER (FIG. 1)

Plug the cable in corresponding socket on the charger and plug the power cable into a mains socket.

INSTALLING THE HANDSET AND CHARGING THE BATTERIES (FIG. 2)

Batteries are already installed into handset.




1. Pull to remove the tab from the handset.
2. Place the handset on the charger.

It will emit a beep.

We recommend to keep charging for 15 hours before 1st use.

Warning: Always use the power cable provided in the box.

REGISTRATION TO THE BASE (PREMIUM, ICONIC or ID) (Max 4 handsets can be registered to the same base unit)

1. Make sure the handset is out of the charger and shows **Register** before you begin registration.
2. While in idle mode, press and hold  under the telephone base of Premium, Iconic or ID for around 8 seconds.
3. Press  on handset for registration, and then enter pin (0000), press .

It takes max. 90 seconds to

complete the registration process.

TROUBLESHOOTING

As a general rule, if a problem occurs, remove the batteries from all handsets for about 1 minute, then disconnect and reconnect the power supply to the base and reinstall the handset batteries.

If you need more information or support please consult the support/ Q&A section on our website:

www.alcatel-home.com

REPLACE BATTERY (FIG. 3)

- To access the battery, use a screw driver, insert the tip into the recess and lift the handset cover.
- Unplug the connector and remove the battery pack.
- Insert and plug-in the new battery pack.
- Replace the handset cover.



Always use same battery pack as the one provided with the phone.

SAFETY

This telephone is not designed for Emergency calls when the mains power fails. Do not use your telephone to notify a gas leak or other potential explosion hazard. Do not open your device or its power supply to avoid risk of electrical shock. Do not attempt to open the batteries, as they contain hazardous chemical substances. Your telephone must be located in a dry place away from hot, humide and direct sunlight condition.


To avoid radio signal interference, place the phone at least 1 meter away from other electrical appliances or other phones.

ENVIRONMENT

  This symbol means that your inoperative electronic appliance must be collected separately and not mixed with the household waste. Local authority has implemented a specific collection and recycling system for which producers are responsible.

Help us protect the environment in which we live!

CONFORMITY

 Hereby, ATLINKS EUROPE declares that the radio equipment type DECT is in compliance with Directive 2014/53/EU. The full text of the EU declaration of conformity is available at the following internet address:

www.alcatel-home.com

- Average power per channel: 10mW
- Maximum Output Power (NTP) : 24dBm
- Frequency Range :1880-1900MHz

WARRANTY

This product is guaranteed in accordance with the laws in force in the country where you purchased it. Please consult our web page for detailed information on the guarantee applicable in that country and the steps to be taken to implement it:

www.alcatel-home.com

TECHNICAL DETAILS

Field Range	Up to 300 meters**
Indoor Range	Up to 50 meters**
Handset Battery Autonomy (average values)	8 hours talk time*** 100 hours standby***
Number of Handsets	Up to 4
Charger Adaptor	Model No.: AT-536B-060045B/ MLF-A250600450CB Input: 100-240 V/ 50-60 Hz/0.15 A Output: 6.V DC/450 mA, 2.7W Only use the adaptors supplied with telephone. Single-phase AC, excluding IT install defined by the EN62368-1 standard. Caution: The network voltage is classified as hazard by the criteria of this standard.
Batteries per handset	2 x 2/3 AAA NiMH battery pack - 2.4V 350mAh Only use the batteries pack supplied with the telephone. Use any other type of battery presents a risk of explosion. Used batteries must be disposed of in compliance with current environmental protection regulations.
Operating Temperature	From 5°C to 40°C

** Values may vary according to environment.
*** Depending on initial battery charge.

ATLINKS Europe
28 Boulevard Belle Rive 92500
92500 RUEIL-MALMAISON - France
RCS Nanterre 508 823 747

ATLINKS UK Ltd
3rd Floor, Waverley House
7-12 Noel Street, London, W1F 8GQ - UK
Company registration: 13809295
www.alcatel-home.com

Alcatel is a trademark of Nokia,
used under license by Atlinks.
e-Pure Handset_UK
A/W no.: 10002858 Rev.1 (EN)
Made in P.R.C.